

*Dur-A-Flex® - Advanced flooring systems meeting industry requirements.*

# Mechanical Rooms



**W**ater containment. Chemical resistant. Safety. Endurance. Some of the needs of a mechanical room floor. In mechanical room environments, Dur-A-Flex® systems provide an extra degree of strength and

---

**More than 40 years extensive field knowledge and the most advanced, tested and trusted epoxies, MMA and urethanes in the industry.**

---

performance. Seamless wall to wall construction and integral cove base creates a clean look with an easy to maintain surface. Elastomeric waterproof membrane with choice of Dur-A-Gard™ Topcoat or Shop Floor™ Resurfacer System offers maxi-

imum protection from leakage to occupied areas below. All Dur-A-Flex® products meet or exceed USDA, FDA and OSHA requirements.

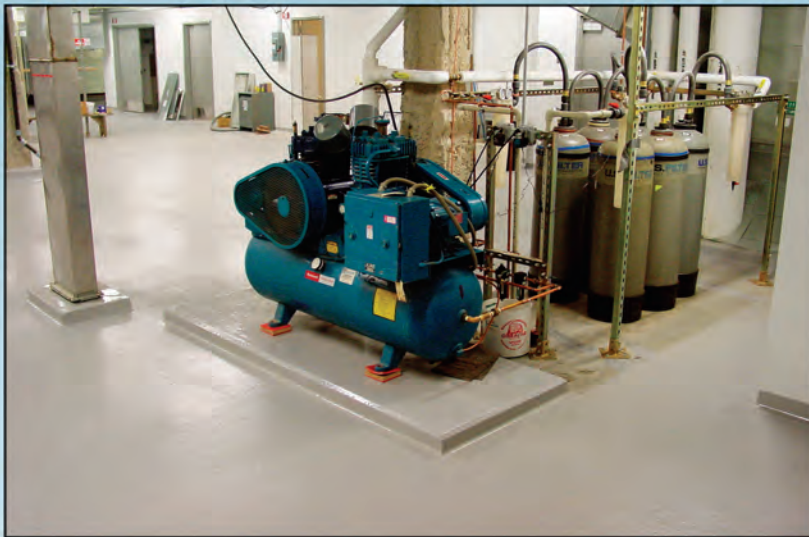
- waterproof membranes
- chemical resistant
- skid resistant
- easy maintenance
- lasting durability
- stain resistant
- sanitary
- decorative

**Contact us at (800)253-3539 or [www.dur-a-flex.com](http://www.dur-a-flex.com)**

PERFORMANCE FLOORING SOLUTIONS  
**DUR-A-FLEX® Inc.**  
EPOXIES • MMA • URETHANES  
COLORED QUARTZ AGGREGATES

# Flooring Solutions for Mechanical Rooms

The first step to your mechanical room flooring system is to apply our Elast-O-Coat™ Waterproofing Membrane to reduce the risk of leakage to occupied areas below in the event of water or chemical spillage. Elast-O-Coat™ is a tough, high quality, 100% solids 2 part elastomer-modified high build epoxy coating. It is designed for use underneath epoxy flooring sys-



tems. It provides a vibration resilient cushion and deadens sound. It can also be used for a crack and joint filler. Elast-O-Coat™ greatly relieves stress that occurs when a substrate cracks or shifts by preventing the crack from transmitting up through an epoxy floor or coating system. Control joints are reinforced with an embedded fiberglass mat.

- Truck Garages
- Locker Rooms
- Hallways
- Recreation Rooms
- Kitchens
- Shower & Restrooms
- Outside Areas/Ramps

We recommend two options to resurface the membrane. For lighter duty areas, use our Dur-A-Gard™ System. It is a pigmented, two component, low odor, 100% solids, thermosetting epoxy designed especially for flooring applications subjected to chemicals and moderate traffic. Available in 20-40 mil thickness, this coating is ideally suited for applications on concrete, wood and metal. The mixture prevents running--making it perfect for wall applications as well. It is extremely durable, sanitary and easy to clean. The high gloss, tile-like finish is stain

Contact us for information about performing site surveys or evaluations. We are here to answer your questions and help you find solutions for your floor coating needs.

Available in versatile styles & color blends

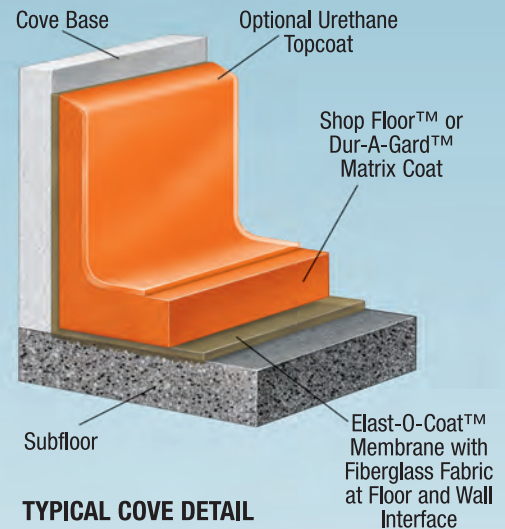


QUARTZ

DECORATIVE  
CHIP

SOLID

Full-size color charts available upon request.



TYPICAL COVE DETAIL

resistant and virtually unaffected by oil, grease, gasoline and chemicals.

For heavy duty areas, our Shop Floor™ System is a tinted Dur-A-Glaze™ 100% solids epoxy and natural quartz sand combination that outlasts and outperforms all others. Ideal for restoration, repair or new construction, Shop Floor™ bonds permanently to most sound substrates including concrete and plywood floors. With a 1/16"-1/8" thickness, it installs easily using a broadcast or trowel method and cures quickly for minimal down time. If extra chemical resistance is required, optional urethane topcoats are available.

**Von Martin**  
Specialty Flooring & Coatings

[www.vonmartin.com](http://www.vonmartin.com)  
Indianapolis, IN  
P: 317-888-4466 Fax: 317-888-4730